

2nd International
Congress on

BRAIN & BEHAVIOUR

International Society on Brain and Behaviour



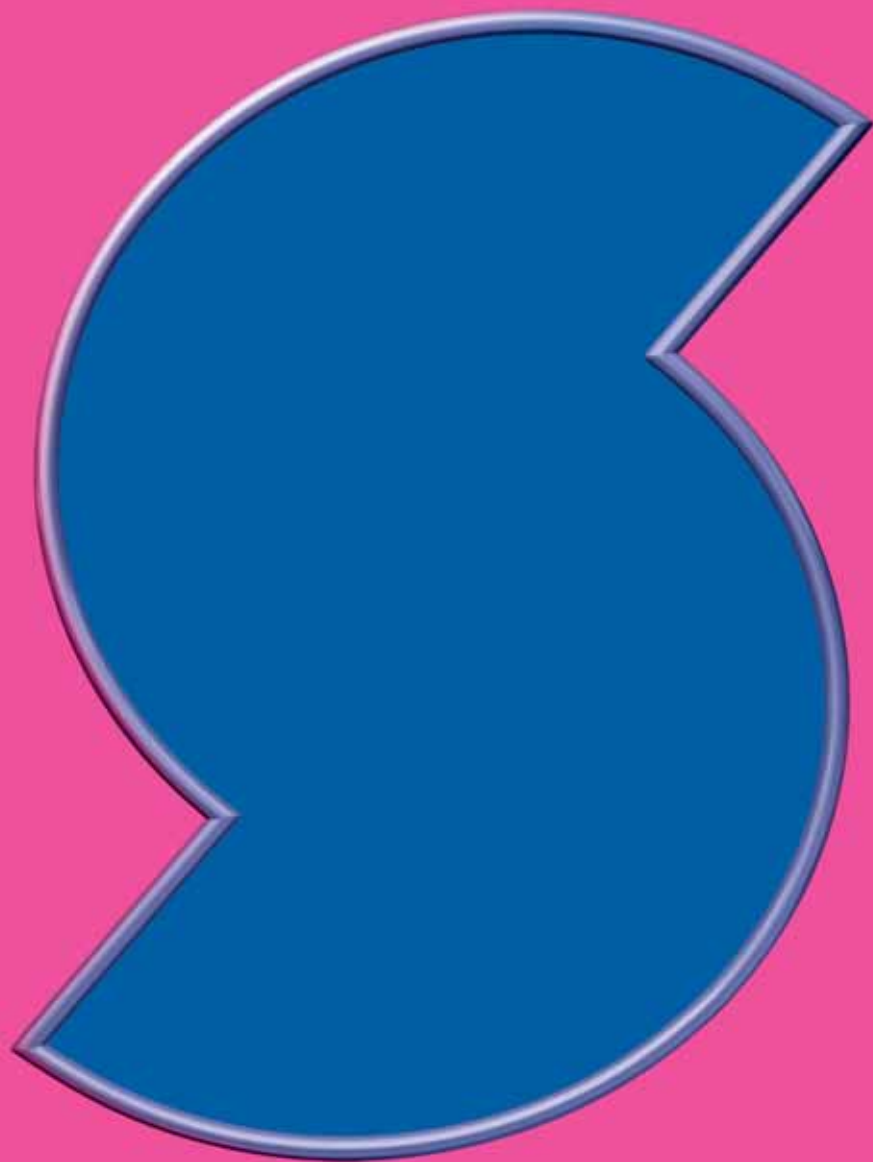
17-20 NOVEMBER
2005

www.psychiatry.gr

Accredited with CME credits
by the UEMS/ EACCME

3rd Announcement

GRAND HOTEL PALACE
THESSALONIKI
GREECE



AstraZeneca 
ΚΝΣ

 **Seroquel**
quetiapine

A close-up, vertical view of a violin and its sheet music. The violin is positioned on the left side of the frame, with its body and f-hole clearly visible. The sheet music is open and placed behind the violin, showing several staves of musical notation. The background is a solid, deep blue color.

 **GEODON**[®]
(ziprasidone HCl)

Pfizer

Dear colleagues,



It's a great pleasure to invite you to the **"2nd International Congress on Brain and Behaviour"**, that will take place in Thessaloniki Greece, on November 17 -20, 2005.

During the "1st International Congress on Brain and Behaviour", participants had the opportunity to get in touch with the latest knowledge and to exchange ideas with worldwide distinguished experts from different scientific areas, in a true multidisciplinary approach. The 2nd Congress will try to work further towards this direction, bringing participants closer to the progress on scientific research concerning psychopathology, new treatment methods, genetics and molecular biology.

Once again, the congress does not merely aim to provide an image of this evolution, nor of the changes that have already or will occur in the future concerning everyday clinical practice; but, furthermore, it aims to provide emphasis on the human dimension, which springs out from the application of sophisticated methods and technologies, in an ever technocratic-oriented environment. From all medical specialties, Psychiatry is the one with the most humanitarian past, present and we hope the future as well.

The Chairman of the Organizing Committee

George St. Kaprinis

Professor of Psychiatry, Aristotle University of Thessaloniki, Greece

Editor, Annals of General Psychiatry

<http://www.annals-general-psychiatry.com/>

MAIN TOPICS OF THE CONGRESS

- Anxiety disorders
- Behavioural disorders
- Bioethics
- Biological rhythms
- Biomedical Technology
- Childhood and adolescence disorders
- Clinical Psychiatry
- Drug development
- Eating disorders
- Forensic Psychiatry
- Health Economics and Quality of Life
- Learning abilities and disabilities
- Major disaster and mental health
- Memory and cognitive disorders
- Methodology in Psychiatric research
- Mood disorders
- Neuroimaging
- Neurophysiology
- Neuropsychobiology
- Neuropsychoneuroendocrinology
- Non pharmacological biological therapies
- Nosology and classification
- Pharmacogenetics
- Psychiatric Genetics
- Psychogeriatrics
- Psychoimmunology
- Psycholinguistics
- Psychopharmacology
- Psychophysiology
- Psychosocial and other non-biological therapies and interventions
- Schizophrenia and other psychotic disorders
- Sexual behaviour and disorders
- Sleep
- Social Psychiatry
- Stress
- Substance abuse and dependence
- Suicide
- Transcultural Psychiatry
- Violence

Organizing Committee

Honorary President: Arvid Carlsson, 2000 Nobel laureate in Medicine (Sweden)

Chairman: Kaprinis G. (Greece)

Members: Akiskal H. (USA)

Angst J. (Switzerland)

Baloyiannis S. (Greece)

Bouras C. (Switzerland)

Bouras N. (UK)

Csernansky J. (USA)

Fotiou F. (Greece)

Fountoulakis K. (Greece)

Frangou S. (UK)

Giannacopoulos P. (Switzerland)

Goodwin G. (UK)

Iacovides A. (Greece)

Janca A. (Australia)

Kandyllis D. (Greece)

Karavatos A. (Greece)

Maj M. (Italy)

Marneros A. (Germany)

Mentenopoulos G. (Greece)

Moussaoui D. (Maroko)

Mumenthaler M. (USA)

Nimatoudis I. (Greece)

O'Hara R. (USA)

Okasha A. (Egypt)

Phokas K. (Greece)

Roussaux J.P. (Belgium)

Sanger D. (France)

Saracceno B. (Switzerland)

Sartorius N. (Switzerland)

Sharma T. (UK)

Sitzoglou K. (Greece)

Souery D. (Belgium)

Tsiptsios J. (Greece)

Vieta E. (Spain)

Yesavage J. (USA)

Scientific Committee

Chairman: Pichot P. (France)

Members: Agathon M. (France)
Apter A. (Israel)
Arango C. (Spain)
Baral I. (Turkey)
Bech P. (Denmark)
Berati S. (Greece)
Berger M (Germany)
Buchsbaum M (USA)
Christodoulou G. (Greece)
Den Boer J. (The Netherlands)
Donchev T. (Bulgaria)
Erfurth A. (Germany)
Falkai P. (Germany)
Fleischhacker W. (Austria)
Giba-Tziabiri O. (Greece)
Gold G. (Switzerland)
Grunze H. (Germany)
Halaris A. (USA)
Hantouche E. (France)
Ierodiakonou Ch. (Greece)
Kahn R. (The Netherlands)
Kazis A. (Greece)
Koichev G. (Germany)
Kostic V. (Serbia & Montenegro)

Kovari E. (Switzerland)
Kraemer H. (USA)
Lecrubier Y. (France)
Lykouras L. (Greece)
Martinez-Aran A. (Spain)
Mavreas V. (Greece)
Mintz M. (Israel)
Moller H.J. (Germany)
Papadimitriou G. (Greece)
Papanicolaou A. (USA)
Perugi G. (Italy)
Peuskens J. (Belgium)
Pinder R. (The Netherlands)
Rabavilas A. (Greece)
Romney D. (USA)
Sachs G. (USA)
Silverstone P. (Canada)
Soldatos C. (Greece)
Sommer B. (USA)
Stefanova E. (Serbia & Montenegro)
Tandon R. (USA)
Vgontzas A. (USA)
Zohar J. (Israel)

Local Scientific Committee

Agelopoulos E.	Iacovides V.	Psarros C.
Alevizos V.	Ierodiakonou-Benou I.	Rogotis Ch.
Ambatzoglou G.	Kimiskidis V.	Sakkas P.
Arnaoutoglou A.	Kiziridou S.	Sourvinos T.
Athanasiadis L.	Kontaxakis V.	Stefanis N.
Bostantzopoulou S.	Kontopoulos V.	Tsegos G.
Botsis A.	Kosta V.	Tsitsopoulos Ph.
Degleris N.	Laskaratos Ch.	Tzavaras N.
Diacogiannis I.	Liappas I.	Tzebelikos E.
Dimitriou E.	Mailis A.	Vidalis A.
Esagian G.	Mastoridis E.	Vlaikidis N.
Gatzogias A.	Mavridis T.	Xaphenias D.
Grigoriadis N.	Orologas A.	Zilikis N.
Hamlatzis P.	Papageorgiou Ch.	
Hatzimanolis I.	Papapetropoulos A.	

SCIENTIFIC PROGRAM

Pre-congress workshops

Jointly organized by the International Society on Brain and Behaviour and the Hellenic College of Academic Psychiatry

SATURDAY, November 12th, 2005

2nd Hellenic Joint Course for the Assessment of Psychopathology Nov 12-15, 2005

Workshop:
SCAN (day 1)

Coordinator:
Venetsanos Mavreas

- 10:00-10:45 Introduction to the SCAN
- 11:00-11:45 Aims, principles domains of the SCAN
- 12:00-12:45 Scoring methods, recording and results
- 13:00-13:45 Video projection and training

Workshop:
Economics of Mental Health Care and Policy

Coordinators:
Antonis Karokis
Alexandra Christodouloupoulou

- Introduction to Health Economics and Policy
- The Economics of Mental Health Care and Policies
- Economic Evaluation of Pharmaceutical Interventions in Mental Health Care
- Practical Applications (emphasis on antipsychotic and antidepressant pharmaceutical therapies)

13:45-15:00 Lunch break (light lunch)

15:00-15:45 Glossary 1

The Measurement of Health Related Quality of Life

16:00-16:45 Glossary 2

Practical Applications (emphasis on antipsychotic and antidepressant therapies)

SUNDAY, November 13rd, 2005

Workshop:
SCAN (day 2)

Coordinator:
Venetsanos Mavreas

- 10:00-10:45 ICD-Classification
- 11:00-11:45 Structure of domains 3-8

Workshop:
Neuropsychological assessment of mental patients

Coordinators:
Ioannis Nimatoudis
Konstantinos Phokas

- Attention-Concentration
- Short-term memory

12:00-12:45	Use of the Rating Scale I	Long-memory-Autobiographic memory
13:00-13:45	Training in scoring	Frontal lobe function
<hr/>		
13:45-15:00	Lunch break (light lunch)	
<hr/>		
15:00-15:45	Structure of domains 4 and 5	Working memory-executive function
16:00-16:45	Training in scoring	Neuropsychological assessment and psychopathology

MONDAY, November 14th, 2005

Workshop:
SCAN (day 3)

Coordinator:
Venetsanos Mavreas

Workshop:
Neurological examination for the non-Neurologist

Coordinators:
Konstantinos Kapinas
Vasileios Kimiskidis

10:00-10:45	DSM-IV Classification	Cranial nerves-I
11:00-11:45	Structure of domains 2 and 5	Cranial Nerves-II
12:00-12:45	Structure of domains 11 and 12	Motor System
13:00-13:45	Structure of domains 16-22	Sensory System
<hr/>		
13:45-15:00	Lunch break (light lunch)	
<hr/>		
15:00-15:45	Structure of domains 22-25	Coordination, stance and gait
16:00-16:45	Training in scoring	Higher Cognitive Functions

TUESDAY, November 15th, 2005

Workshop:
IPDE

Coordinators:
Alexandar Janca
Konstantinos N. Fountoulakis

Workshop:
Advanced Training on psychoeducation in bipolar disorders

Coordinator:
Francesc Colom

10:00-10:45	ICD-10-based diagnostic instruments	Psychoeducation: setting and basic principles
11:00-11:45	Development and evaluation of the Greek IPDE	Illness awareness and life-chart method
12:00-12:45	Format and structure of IPDE	Treatment adherence enhancement
13:00-13:45	IPDE rating and scoring conventions	Early detection of relapses
<hr/>		
13:45-15:00	Lunch break (light lunch)	
<hr/>		

- | | | |
|-------------|--|--|
| 15:00-15:45 | IPDE screener and IPDE section by section review | Avoidance of substance use.
Habits regularity |
| 16:00-16:45 | IPDE practice interviews | Efficacy on relapse prevention. |

WEDNESDAY, November 16th, 2005

Workshop:
WHO's Research for Change initiative: enhancing the quality of mental health publications from low- and middle- income countries

Coordinators:
Shekhar Saxena, WHO
Pratap Sharan, WHO

Workshop:
Dementia and depression in the elderly: from structural changes to clinical issues

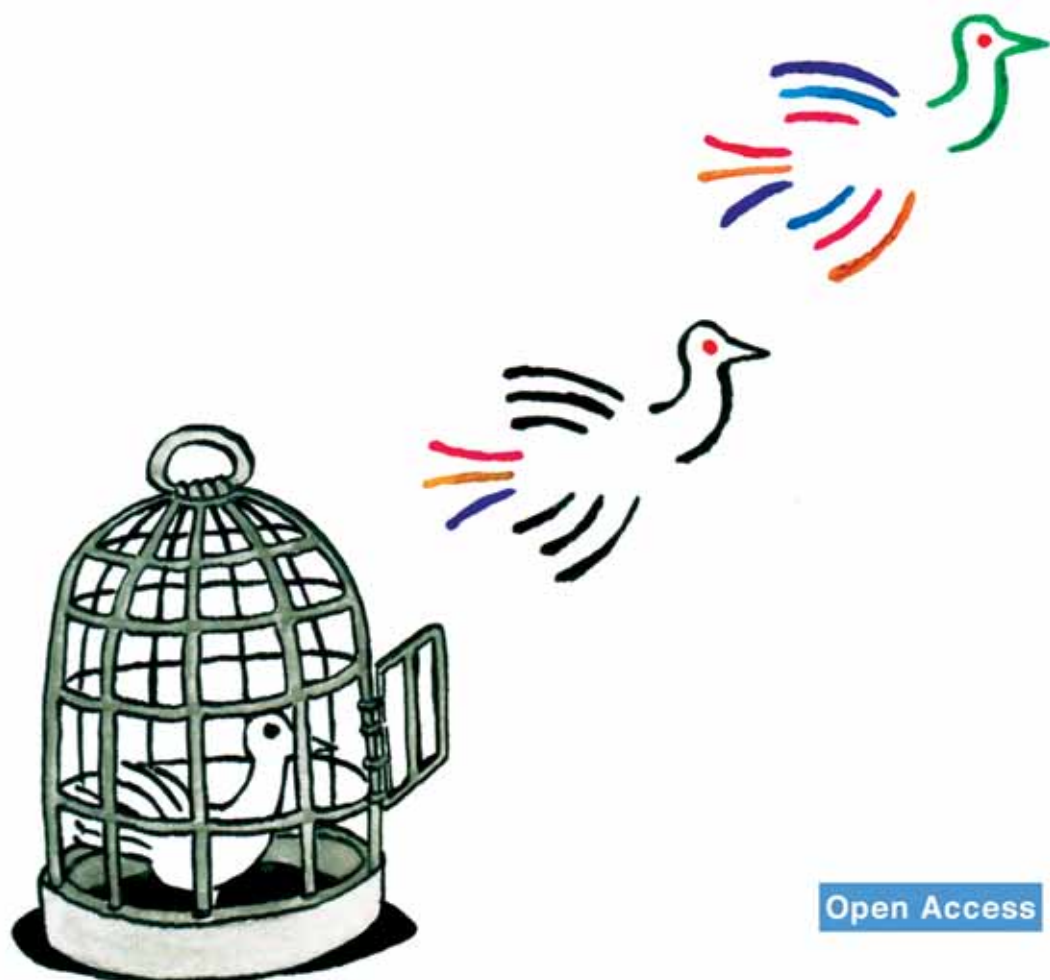
Coordinators:
Panteleimon Giannakopoulos
Constantin Bouras

- | | | |
|-------------|---|--|
| 10:00-10:45 | General Issues and Writing Skills: organization of medical journals, types of biomedical study, writing style, the Vancouver convention, original research article writing | Differential diagnosis and pharmacological treatments of dementias (G. Gold) |
| 11:00-11:45 | Technical Skills: critical review of articles, detailing methodology, biostatistics, multivariate analysis | Vascular brain aging (C. Bouras) |
| 12:00-12:45 | Peer Review and Journal Selection: peer review process, types of journals (including e-journals), possibility of pre-communication and mentorship, tips on selecting journals | Post-stroke dementia: an overview (G. Gold) |
| 13:00-13:45 | Editing Mental Health Journals: Journal Content , Policies and Peer Review | Dealing with severe dementia: the concept of therapeutic community (A. Canuto) |

13:45-15:00 Lunch break (light lunch)

- | | | |
|-------------|--|---|
| 15:00-15:45 | Journal Operations: editorial office management and journal production | Late-life depression: a state of the art (P. Giannakopoulos) |
| 16:00-16:45 | General Topics on Publication - financing, publishing and electronic publishing, business and ethical aspects of advertising, the editorial and production workplace, ethical obligations of authors | Post-stroke depression: neuroanatomical background and clinical management (V. Bozikas) |

Support Open Access



Open Access



BioMed Central
The Open Access Publisher

www.biomedcentral.com



ANNALS OF GENERAL
PSYCHIATRY

www.annals-general-psychiatry.com

SCIENTIFIC PROGRAM

Main Congress

THURSDAY, November 17th, 2005

17:00-18:30 **Round Table:** Characteristics of musical pitch and timbre-related processing within the peripheral and central nervous system

Chairpersons: Gerald Langner, George Papadelis

George Papadelis: Music & Neuroscience: A multidisciplinary Approach to the neurobiological substrates of music related behavior

Konstantinos Pasiadis: Auditory information processing: The computational approach

Gerald Langner: Neuronal mechanisms underlying the perception of pitch and harmonicity

Peter Schneider: Structural, functional and perceptual differences in the auditory cortex of musicians and non-musicians

18:30-19:00 **Chairperson:** Apostolos Iacovides

Lecture

Athanasios Koukopoulos: The primacy of mania

19:00-20:30 **Round Table:** Psychobiological course of psychosis: further prognostic and therapeutic implications

Chairpersons: George Kaprinis, Hans-Juergen Moeller

Rene Kahn: Schizophrenia as a progressive brain disorder

Hans-Juergen Moeller: Long-term outcome of schizophrenia and its neurobiological background

Jerom Yesavage: Predictors of agitation and assault on inpatient psychiatry services

Vassilios Athyros: Antipsychotic drugs and metabolic disorders

The round table is based on an educational grant by Pfizer Hellas

20:30-22:00 **OPENING CEREMONY**

Greetings

Lecture by Professor **Arvid Carlsson**, 2000 Nobel laureate in Medicine: "My Six Decades of Odyssey Among the Blind Rocks of Research"

22:00 **OPENING RECEPTION**

FRIDAY, November 18th, 2005

10:00-10:30 **Chairperson:** Ioannis Nimatoudis

Lecture

Elie Karam: Affective temperament in the general population

10:30-12:00 **Round Table:** Structural and functional background of cognitive decline in old age

Chairpersons: Konstantinos Phokas, Nikolaos Tzavaras

Panteleimon Giannakopoulos: Predicting cognitive decline in mild cognitive impairment: the issue of biological markers

Constantin Bouras: Functional neuroanatomy in brain aging and Alzheimer's disease

Eniko Kövari: Dementia in the oldest-old: a limbic form?

Gabriel Gold: Cognitive impact of microvascular lesions and lacunes in the aging brain

12:00-12:30 **COFFEE BREAK**

12:30-13:00 **Chairperson:** Stavros Baloyannis

Lecture

Ruth O'Hara: Role of stress in neuropsychiatric and neurocognitive disorders in older adults, specifically on late life depression and cognition

13:00-14:30 **Round Table:** Anxiety and depression: Two disorders-One therapy

Chairpersons: Constantinos Soldatos, Athanasios Karavatos

Per Bech: Outcome measures in depression

Venetsanos Mavreas: The co-existence of depression and anxiety: results from a primary care study

Allan Gelenberg: Generalized Anxiety Disorder: An Evolving Concept at the Border of Anxiety and Depression

Jeffrey Kelsey: Major Depressive Disorder: Attempting to bridge the gap from basic science to clinical practice

The round table is based on an educational grant by Wyeth

14:30-17:00 **BREAK**

Boehringer Ingelheim Ελλάς SA

SATELITE SYMPOSIUM: Duloxetine: Efficacy and Safety of the new balanced SNRI in the Treatment of Major Depressive Episodes

Chairperson: Nikiforos Angelopoulos

Michael Bauer: Efficacy of Duloxetine in achieving Response and Remission

Peter Haddad: Safety and Tolerability of Duloxetine - Adverse events and how to handle them

FRIDAY, November 18th, 2005

17:00-17:30 **Chairperson:** Eduard Vieta

Lecture

Elie Hantouche: Complex clinical picture of Mania: Links among mixity, anxiety and instable temperament

17:30-19:00 **Round Table:** Global clinical improvement of major psychiatric disorders: A difficult but not impossible task

Chairpersons: George Papadimitriou, Eduard Vieta

George Papadimitriou: A critical evaluation of antipsychotics; towards the next generation?

Radjiv Tandon: Psychoses and their treatments: A dual threat for the patients' total health?

Eduard Vieta: Bipolar disorders: From remission to maintenance

The round table is based on an educational grant by Bristol-Myers Squibb Co

19:00-19:30 **COFFEE BREAK**

19:30-20:00 **Chairperson:** Fotis Fotiou

Lecture

Monte Buchsbaum: White matter in schizophrenia: larger in volume, more disorganized, and more metabolically active

20:00-21:30 **Round Table:** Remission in schizophrenia: A new challenge

Chairpersons: Nancy Andreasen, George Kaprinis

John Csernansky: Improving the long term outcome of schizophrenia

Nancy Andreasen: Defining remission: Proposed criteria and rationale for consensus

Konstantinos N. Fountoulakis: Remission in different domains of symptoms and deficits

Joseph Peuskens: Evaluation of remission in clinical practice

The round table is based on an educational grant by Janssen-Cilag

21:30 **WELCOME RECEPTION**



SATURDAY, November 19th, 2005

10:00-10:30 **Chairperson:** Stavroula Berati

Lecture

Andrew Papanicolaou: Cerebral mechanisms of Language: Magnetoencephalographic studies

10:30-11:00 **Chairperson:** George Mentenopoulos

Lecture

John Csernansky: Neuroanatomical markers of early Alzheimer's disease

11:00-12:30 **Round Table:** Schizophrenia: From the target symptom to the target receptor; from genes to jobs

Chairpersons: George Christodoulou, David Sanger

David Sanger: The Pharmacology and Mechanisms of Action of Atypical Antipsychotic Drugs: Dopamine and Beyond

Dan Haupt: Clinical considerations in selecting and using atypical antipsychotics

Tonmoy Sharma: Cognitive enhancement in Schizophrenia with Pharmacological interventions

George Papageorgiou: Comparison of second generation antipsychotics: Are there any differences in efficacy?

The round table is based on an educational grant by Sanofi-Aventis

12:30-13:00 **COFFEE BREAK**

13:00-14:30 **Round Table:** Managing mental illness: from Being to Well-Being

Chairpersons: Nikiforos Angelopoulos, Jonathan Hellewell

Nikiforos Angelopoulos: The importance of Quality of Life (QoL) in the rehabilitation of mentally ill patients

Celso Arango: Experience with the treatment of first episode of Schizophrenia: Functional outcome

Jonathan Hellewell: The long term treatment of Schizophrenia: Effect on patients lives

Heinz Grunze: Improving QoL for bipolar patients: Treatment of different and complex phases of illness

The round table is based on an educational grant by AstraZeneca S.A.

14:30-16:00 **Meeting** of the members of the Hellenic College of Academic Psychiatry

14:30-16:00 **Round table:** Cost and effectiveness in psychotherapy

Chairperson: Ioannis K. Tsegos

Natassa Karapostoli: Review of cost-effectiveness studies

Anna Tziotziou: Demographic and psychiatric characteristics of the patients treated into a psychotherapeutic community

SATURDAY, November 19th, 2005

Daniella Capelluto: Demographic and psychiatric data of the patients addressed for therapy into the Adult Therapy Department

Vassiliki Villiotou: Therapeutic outcome and cost-effectiveness analysis of patients treated in Groupal Methods (Group Analysis, Psychodrama, Therapeutic Community)

Nikos Polyzos: The cost of psychotherapy in a Day Centre

16:00-17:00 **BREAK**

17:00-17:30 **Chairperson:** Vasileios Kontaxakis

Lecture

Andreas Erfurth: Temperament and affective disorders

17:30-19:00 **Round Table:** Restoring balance in the lives of patients with depression

Chairpersons: Norman Sartorius, Constantinos Soldatos

Norman Sartorius: Depressive disorders and public health

Yves Lecrubier: The role of physical symptoms in depression and in achieving remission

George Alevizopoulos: New treatment options in antidepressant therapy

The round table is based on an educational grant by Pharmaserve-Lilly SACI

19:00-19:30 **COFFEE BREAK**

19:30-20:00 **Chairperson:** Andreas Rambavilas

Lecture

Hagop S. Akiskal: Origins of Depression: Genes, Gender, Temperament, Stress and Culture

20:00-21:30 **Round Table:** Relapse prevention: the ultimate therapeutic goal

Chairpersons: George Kaprinis, Gary Sachs

Stefan Leucht: The implications of relapses on the evolution of schizophrenia. How to prevent them?

Gary Sachs: Preventing relapse in Bipolar Disorder

Giulio Perugi: The Bipolar II- Borderline Personality connection: Treatment implications and prevention of relapses

The round table is based on an educational grant by Pharmaserve-Lilly SACI

21:30 **AWARDS CEREMONY:** Aristotles Gold Medal and Aristotles Research Awards

GALA DINNER

SUNDAY, November 20th, 2005

09:00-10:30 **Round table:** Alcoholism: Current Issues

Chairpersons: Ioannis Liappas, Elissavet Kapaki

Ioannis Liappas: Alcoholism: Biosocial parameters

Iliia Theotoka: Cognitive Impairment in Alcoholism

Elissavet Kapaki: Alcoholic Dementia: Myth or Reality?

George Paraskevas: Neurochemical markers in CSF

Ioannis Diakogiannis: Therapeutic Approaches

10:30-12:00 **Round Table:** Perspectives on aggression

Chairpersons: Lefteris Lykouras, Vasileios Alevizos

Lefteris Lykouras: Neurobiological correlates of aggression

Athanasios Douzenis: Psychopathology and violent behaviour

Vasileios Alevizos: Pharmacotherapy of aggression

Dimokritos Sarantidis: Treatments for the victims of violence

12:00-12:30 **COFFEE BREAK**

12:30-13:00 **Chairperson:** Athanasios Vidalis

Lecture

Roger Pinder: Wine, alcohol and cognition

13:00-13:30 **Chairperson:** Dimitrios Kandyliis

Lecture

Eric Constant: Executive dysfunctions in hypothyroidism and major depression

13:30-15:00 **Round Table:** Psychiatric Diagnosis in a Cross Cultural Perspective

Chairpersons: Driss Moussaoui

Aleksandar Janca: Time, culture and psychiatric diagnosis

Driss Moussaoui: How relative is cultural relativity in psychiatry?

Third speaker: TBD

15:00 **CLOSING CEREMONY**

Charalambos Ierodiaconou: Aristotle on friendship and eros

LIST OF CONTRIBUTORS

Akiskal, H.	Professor of Psychiatry, Mood Disorders Center, University of California at San Diego, V.A. Medical Center San Diego, USA
Alevizopoulos, G.	Assistant Professor of Psychiatry, Athens University Medical School, Aeginition Hospital, Athens Greece
Alevizos, V.	Associate Professor of Psychiatry, Athens University Medical School Department of Psychiatry, Eginition Hospital, Athens, Greece
Andreasen, N.	Professor of Psychiatry, University of Iowa, USA
Angelopoulos, N.	Professor of Psychiatry, director of the Department of Psychiatry, University of Thessaly, Larissa, Greece
Arango, C.	Asistant Professor of Psychiatry, Universidad Complutense, Madrid, Spain
Athyros, V.	2 nd University Prop. Department of Internal Medicine, Aristotle University of Thessaloniki, Greece
Baloyannis, S.	Professor of Neurology, Director of the 1 st Department of Neurology, Aristotle University of Thessaloniki, Greece
Bauer, M	Professor of Psychiatry, Head, Department of Psychiatry and Psychotherapy, Director, Outpatient Clinics Charit - University Medicine Berlin, Germany
Bech, P.	Professor of Psychiatry, Psychiatric Research Unit Frederiksborg General Hospital Hilleroed, Denmark
Berati, S.	Professor of Psychiatry, Child Psychiatry and Psychoanalysis, Department of Psychiatry, University of Patras, Greece
Bouras, C.	Division of Neuropsychiatry, Department of Psychiatry, University Hospitals of Geneva, Switzerland
Bozikas, V.	Lecturer in Psychiatry, 2 nd Department of Psychiatry, Aristotle University of Thessaloniki, Greece
Buchsbaum, M.	Professor, Mount Sinai School of Medicine, Department of Psychiatry, New York, NY USA
Canuto, A.	Division of Geriatric Psychiatry, Department of Psychiatry, University Hospitals of Geneva, Switzerland
Capelluto, D.	Psychiatrist, Group Analyst, Open Psychotherapeutic Center, Athens, Greece
Carlsson, A.	2000 Nobel laureate in Medicine, Professor Emeritus, University of Gothenburg, Sweden.
Christodouloupoulou, A.	Health Economics Manager, AstraZeneca Hellas, Athens Greece
Christodoulou, G.	Professor Emeritus of Psychiatry, University of Athens, Greece and President of the Hellenic Psychiatric Association
Colom, F.	Bipolar Disorders Program, Hospital Clinic, University of Barcelona, Spain
Constant, .	Department of Psychiatry, Université Catholique de Louvain, Belgium
Csernansky, J.	Gregory B. Couch Professor of Psychiatry, Washington University School of Medicine, St. Louis, MO, USA
Diakogiannis, I.	Assistant Professor of Psychiatry, 3 rd Department of Psychiatry, Aristotle University of Thessaloniki, Greece
Douzenis, A.	Ass. Professor in Forensic Psychiatry, Athens University Medical School, Department of General Hospital Psychiatry, Atticon Hospital, Athens Greece
Erfurth, A.	Department of Psychiatry, University of Vienna, Austria
Fotiou, F.	Professor of Neurology, Director of the Laboratory of Neurophysiology, Aristotle University of Thessaloniki, Greece
Fountoulakis, K	Lecturer in Psychiatry, 3rd Department of Psychiatry, Aristotle University of Thessaloniki, Greece
Gelenberg, A.	Professor and Head, Department of Psychiatry, University of Arizona, USA
Giannakopoulos, P.	Division of Geriatric Psychiatry, Department of Psychiatry, University Hospitals of Geneva, Switzerland
Gold, G.	Department of Rehabilitation and Geriatrics, University Hospitals of Geneva, Switzerland
Grunze, H.	Department of Psychiatry, Ludwig-Maximilians University of Munich, Germany

LIST OF CONTRIBUTORS

- Haddad, P** Consultant Psychiatrist, Cromwell House Community Mental Health Centre, Bolton, Salford and Trafford Mental Health NHS Trust, UK
- Hantouche, E.** Mood Center, Universit Paris VI, Piti -Salp tri re Hospital, Paris, France
- Hatzimanolis, I.** Associate Professor of Psychiatry, Eginition Hospital, University of Athens, Greece
- Haupt, D.** Assistant Professor of Psychiatry, Washington University School of Medicine, St. Louis, MO USA
- Hellewell, J.** Department of Psychiatry, Trafford General Hospital, Manchester, UK
- Iacovides, A.** Assoc. Professor of Psychiatry, 3rd Department of Psychiatry, Aristotle University of Thessaloniki, Greece
- Ierodionou, Ch.** Professor Emeritus of Psychiatry, Aristotle University of Thessaloniki, Greece
- Janca A.** Professor of Psychiatry, University of Western Australia, School of Psychiatry and Clinical Neurosciences, Perth, Australia
- Kahn, R.** Professor of Psychiatry, University of Utrecht, Utrecht, The Netherlands
- Kandylis, D.** Assoc. Professor of Psychiatry, 3rd Department of Psychiatry, Aristotle University of Thessaloniki, Greece
- Kapaki, E.** Assistant Professor, Athens University, Medical School, Department of Neurology, Eginition Hospital - Neurochemistry Unit, Athens, Greece
- Kapinas, K.** Assoc. Professor of Neurology, 3rd Department of Neurology, Aristotle University of Thessaloniki, Greece
- Kaprinis, G.** Professor of Psychiatry, Director of the 3rd Department of Psychiatry, Aristotle University of Thessaloniki, Greece
- Karam, E.** Professor of Psychiatry, Department of Psychiatry and Clinical Psychology, Faculty of Medicine, Balamand University, Beirut, Lebanon
- Karapostoli, N.** Occupational Therapist, Psychodramatist-Sociotherapist, Family Therapist, Open Psychotherapeutic Center, Athens, Greece
- Karavatos, A.** Professor of Psychiatry, Director of the 1st Department of Psychiatry, Aristotle University of Thessaloniki, Greece
- Karokis, A.** Government and Public Affairs Manager, Wyeth Hellas, Athens Greece
- Kelsey, J.** Medical Director, Georgia Institute of Mood and Anxiety Disorders, Atlanta, USA
- Kimiskidis, V.** Lecturer in Neurology, 3rd Department of Neurology, Aristotle University of Thessaloniki, Greece
- Kontaxakis, V.** Associate Professor of Psychiatry, Eginition Hospital, University of Athens, Greece
- Koukopoulos, A.** Centro Lucio Bini, Roma, Italy
- Kovari, E.** Division of Neuropsychiatry, Department of Psychiatry, University Hospitals of Geneva, Switzerland
- Langner, G.** Professor, Institute of Zoology, University of Technology, Darmstadt, Germany
- Lecrubier, Y** Directeur de Recherche, INSERM Hopital de la Salpetriere Paris, France
- Leucht, S.** Assistant Professor, Department of Psychiatry and Psychotherapy, Technische Universitaet Muenchen, Germany
- Liappas, I.** Associate Professor, Athens University, Medical School, Department of Psychiatry, Eginition Hospital - "ATHENA" program
- Lykoyras, L.** Director, Department of General Hospital Psychiatry, Athens University Medical School, Atticon Hospital, Athens Greece
- Mavreas, V.** Professor of Psychiatry, director of the Department of Psychiatry, University of Ioannina, Ioannina, Greece
- Mentenopoulos, G.** Professor of Neurology, 2nd Department of Neurology, Aristotle University of Thessaloniki, Greece
- Moeller, H.J.** Professor of Psychiatry and Chairman of the Psychiatric University Department Munich, Germany
- Moussaoui, D.** Professor of Psychiatry, Chairman, Ibn Rushd University Psychiatric Centre, and Director, WHO Collaborating Centre, Casablanca, Morocco
- Nimatoudis, I.** Assoc. Professor of Psychiatry, 3rd Department of Psychiatry, Aristotle University of Thessaloniki, Greece

LIST OF CONTRIBUTORS

- O'Hara, R.** Assistant Director Sierra-Pacific MIRECC, Co-Director VA Special Fellowship in Advanced Psychiatry and Psychology, Assistant Professor, Department of Psychiatry and Behavioral Sciences, Stanford University School of Medicine, USA
- Papadelis, G.** Lecturer, School of Music Studies, Aristotle University of Thessaloniki, Greece
- Papadimitriou, D.** Associate Professor of Psychiatry, Eginition Hospital, University of Athens, Greece
- Papageorgiou, G.** Consultant Psychiatrist, Evangelismos General Hospital, Athens Greece
- Papanicolaou, A.** Professor and Director, Division of Clinical Neurosciences, Department of Neurosurgery, University of Texas- Huston Medical School, USA
- Paraskevas, G.** Research Associate, Neurochemistry Unit, Athens National University, Department of Neurology, Eginition Hospital, Athens, Greece
- Pastiadis, K.** Research Associate, Department of Computer & Electrical Engineering, Aristotle University of Thessaloniki, Greece
- Perugi, G.** Istituto di Scienze del Comportamento G De Lisio, Clinica Psichiatrica Università di Pisa, Pisa, Italy
- Peuskens, J.** Professor of Psychiatry, Katholieke University of Leuven, Belgium
- Phokas, K.** Professor of Psychiatry, Director of the 2nd Department of Psychiatry, Aristotle University of Thessaloniki, Greece
- Pinder, R.** Pharma Consultant, The Netherlands
- Polyzos, N.** Ph.D. in Health Economics, Open Psychotherapeutic Center, Athens, Greece
- Rambavilas, A.** Professor Emeritus of Psychiatry, University of Athens, Greece
- Sachs, G.** Associate Professor of Psychiatry, Harvard Medical School, Director, Bipolar Clinic and Research Program, Massachusetts General Hospital, USA
- Sanger, D.** Sanofi-Aventis Research, Bagneux, France, European Editor, Behavioural Pharmacology
- Sarantidis, D.** Deputy Director, Department of Psychiatry, Evangelismos General Hospital, Athens Greece
- Sartorius, N.** Professor of Psychiatry, Geneva, Switzerland
- Saxena, S.** Coordinator, Mental Health: Evidence and Research, World Health Organisation, Geneva, Switzerland
- Schneider, P.** Research Associate, Department of Neurology, University Hospital, Heidelberg, Germany
- Sharan, P.** Additional Professor, Post-Graduate Institute of Medical Education and Research, Chandigarh, India
- Sharma, T.** Professor of Psychiatry, Clinical Neuroscience Research Centre, Kent, UK
- Soldatos, C.** Professor of Psychiatry, Director of the Department of Psychiatry, Eginition Hospital, University of Athens, Greece
- Tandon, R.** Professor of Psychiatry, director, Schizophrenia Division, Department of Psychiatry, University of Michigan, USA
- Theotoka, I.** Clinical Psychologist, Athens University, Medical School, Department of Psychiatry, Eginition Hospital - "ATHENA" program
- Tsegos, I.** Open Psychotherapeutic Centre, Athens Greece
- Tzavaras, N.** Associate Professor of Psychiatry, Department of Psychiatry, Demokriton University of Thrace, Greece
- Tziotziou A.** Psychologist, Psychodramatist-Sociotherapist, Family Therapist, Open Psychotherapeutic Center, Athens, Greece
- Vidalis, A.** Director of Psychiatric Department, Hippocratio General Hospital, Thessaloniki, Greece
- Vieta, E.** Bipolar Disorders Program, Hospital Clinic, University of Barcelona, Spain
- Villiotou, V.** Biochemist, Psychodramatist-Sociotherapist, Open Psychotherapeutic Center, Athens, Greece
- Yesavage, J.** Professor of Psychiatry, Director of the Aging Clinical Research Center, Stanford University School of Medicine, California USA

3rd

International Congress on

BRAIN & BEHAVIOUR

International Society on Brain and Behaviour

www.psychiatry.gr

23-26 NOVEMBER 2007



THESSALONIKI

GENERAL INFORMATION

ARISTOTLES GOLD MEDAL FOR DISTINGUISHED CONTRIBUTIONS IN PSYCHIATRY:

The International Society on "Brain and Behaviour" announces the Aristotles Gold Medal Award to scientists that made distinguished contributions in the field of Psychiatry and allied disciplines.

Chairpersons of the Aristotles Gold Medal Award: Prof. Hagop S. Akiskal, Prof. George St. Kaprinis.

ARISTOTLES RESEARCH AWARD:

The International Society on "Brain and Behaviour" announces the 2nd Aristotles Research Award of 6,000 Euro to the best submitted paper.

Chairperson of the Aristotles Award Jury: Prof. Hagop S. Akiskal

Submissions for the Award can range across a broad range of topics, such as those bridging psychopathology or behavior with a brain science involving but not limited to neurochemistry, neuropharmacology, neuro-endocrinology, neurophysiology, neuro-imaging, genetics, and animal models of psychopathology. The committee will also consider submissions bridging various disciplines within the realm of clinical psychiatry, epidemiology, and psychopharmacology or other evidence-based treatments. The committee will give particular emphasis to how innovative the submission is and to what extent its application will advance research methodology and/or patient care.

The paper should be submitted in seven (7) copies and must be accompanied with a floppy disk in Word for Windows format. Figures and tables should be incorporated in the text according to the authors' judgment, and the size of the file should not exceed the capacity of one (1) floppy disk. The format of the manuscript should conform with the instructions to the authors for the Society's journal, *Annals of General Psychiatry*, available on-line at <http://www.annals-general-psychiatry.com/>.

The full text of the paper should not exceed 3,000 words and must be submitted in English by August 31st, 2005. The submission of the candidacy should be accompanied by a brief CV of the presenting author (not exceeding 1000 words), an e-mail address for immediate correspondence and (if possible) a mobile phone number. The envelope with the material should be sent by regular mail to Dr K.N. Fountoulakis at the address shown below.

A confirmation e-mail will be sent as soon as possible after receiving the material. (It is the responsibility of the potential candidate to assure that they have a reliable email address where the Scientific Secretariat can contact them).

All clinicians or scientists who submit a paper for presentation at the Brain and Behaviour Society can also apply for the award, with the exception of those already published. The winning paper will be eventually published as a full paper in the *Annals of General Psychiatry*.

POSTER Awards:

The International Society on "Brain and Behaviour" also announces 10 awards of 300 Euro each for the 10 best posters which will be presented during the 2005 conference. All submitted posters are considered candidates for the awards, unless otherwise stated by the author(s). During the congress a poster discussion will take place in front of each poster. The specific time will be announced.

Chairperson of the posters award jury: Prof. Constantin Bouras

Scientific Secretariat and CME activity director

Dr K.N. Fountoulakis, 3rd Department of Psychiatry, Univ. Hosp. AHEPA, 1 Kyriakidi street, 54636, Thessaloniki, Greece, Tel: + 302310-994622, cell: + 306945776935
e-mail: kfount@med.auth.gr, http://www.psychiatry.gr/Scientific_Secretariat2_eng.html

CME Accreditation

The "2nd International Congress on Brain and Behaviour" was accredited by the European Accreditation Council for Continuing Medical Education (EACCME) Institution of the UEMS, to provide CME activity for medical specialists, recognized by the American Medical Association (AMA).

The following CME credits were accredited:**Workshops**

Training in the SCAN (Nov 12-14):	18 CME credits
Training in the IPDE (Nov 15):	6 CME credits
WHO's Research for Change initiative (Nov 16):	6 CME credits
Economics of Mental Health Care and Policy (Nov 12):	6 CME credits
Neuropsychological assessment of mental patients (Nov 13):	6 CME credits
Neurological examination for then non-Neurologist (Nov 14):	6 CME credits
Advanced Training on psychoeducation in bipolar disorders (Nov 15):	6 CME credits
Dementia and depression in the elderly: from structural changes to clinical issues (Nov 16):	6 CME credits

Main Congress Program

18 CME credits

Congress Secretariat**TRIAENA TOURS AND CONGRESS S.A.**

75, Egnatias str., GR- 546 35 Thessaloniki, Greece
 Tel: +302310 256.194-5, Fax: +302310 256.196
 E-mail: salonica@triaenatours.gr
<http://www.triaenatours.gr>

Registration Fees

Specialists:	500 Euro
Residents:	350 Euro
Other mental health professionals:	200 Euro
Students:	Free (Congress material will be provided according to availability)

Fees for Pre-and during the congress workshops

Specialists:	100 Euro
Residents:	80 Euro
Other mental health professionals:	50 Euro
Students:	Free

Not all applied will be accepted to attend workshops because of limitation in the number of participants and because participants will be required to fulfill specific scientific and/or professional standards depending on the workshop content.

Hotel Rates

HOTEL	Category	Single Room	Double Room
GRAND HOTEL PALACE	Deluxe	146 €	169 €
MEDITERRANEAN PALACE	Deluxe	172 €	206 €
PORTO PALACE	Deluxe	88 €	98 €
CAPSIS HOTEL Standard	A	105 €	132 €
CAPSIS HOTEL Club	A	122 €	150 €

The above rates are daily per room including continental breakfast and taxes in Euro

Congress official languages

English will be the official language of the congress. All printed material and poster presentations must be in English. There will be continuous translation from English to Greek.

Congress venue

Grand Hotel Palace, Thessaloniki Greece
 Teaching room of the 3rd Department of Psychiatry, Aristotle University of Thessaloniki, Greece

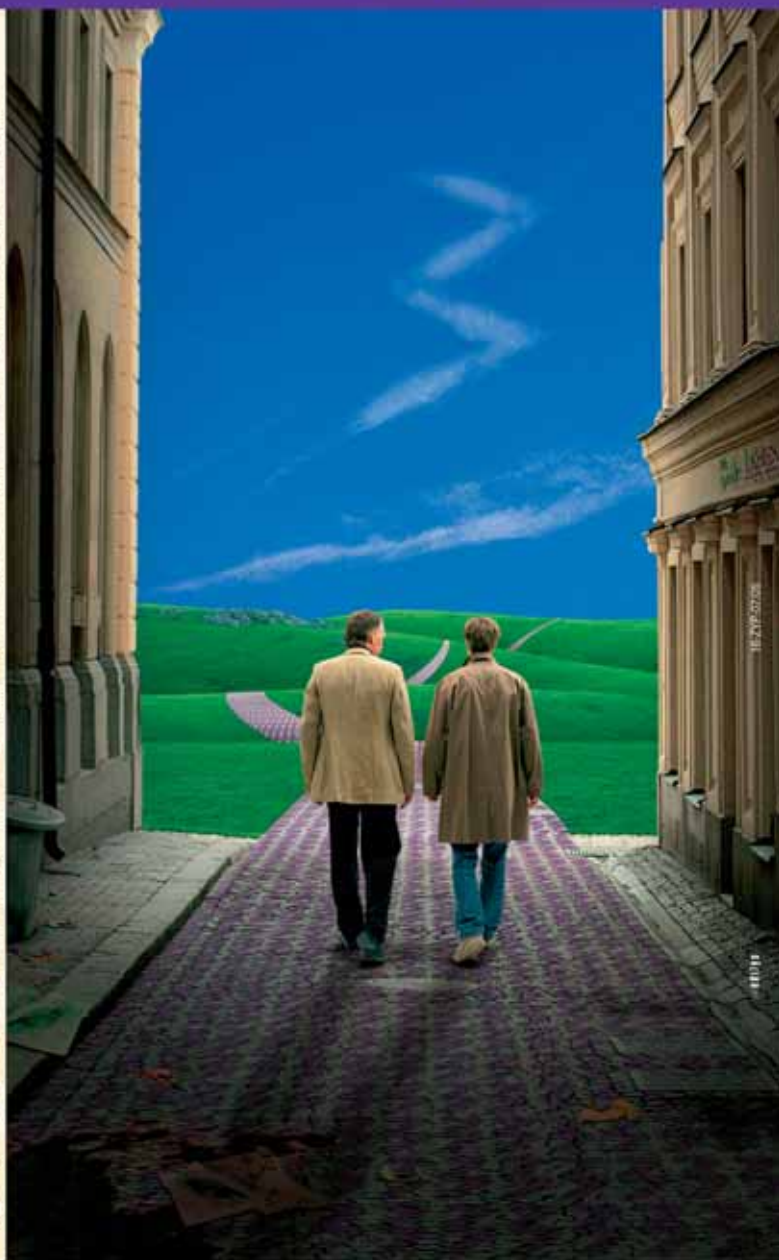
Επειδή η αποτελεσματικότητα μετράει...

ZYPREXA
Olanzapine

ΕΠΑΝΑΦΕΡΕΙ τον ασθενή σας - ΠΡΟΛΑΜΒΑΝΕΙ τις υποτροπές

ΣΥΝΤΕΤΜΗΜΕΝΕΣ ΣΥΝΤΑΓΟΓΡΑΦΙΚΕΣ ΠΛΗΡΟΦΟΡΙΕΣ

ΟΝΟΜΑΣΙΑ ΤΟΥ ΦΑΡΜΑΚΕΥΤΙΚΟΥ ΠΡΟΪΟΝΤΟΣ: ZYPREXA, επικυλωμένο δισκίο των 5 mg. **ΦΑΡΜΑΚΟΤΕΧΝΙΚΗ ΜΟΡΦΗ:** Επικυλωμένα δισκία ZYPREXA των 5 mg στρογγυλά, λευκά χρώματος. **ΘΕΡΑΠΕΥΤΙΚΕΣ ΕΝΔΕΙΞΕΙΣ:** Η ολανζαπίνη ενδείκνυται για την θεραπεία της σχιζοφρένειας. Η ολανζαπίνη είναι αποτελεσματική στη διατήρηση της κλινικής βελτίωσης, κατά την διάρκεια της συνεχόμενης θεραπείας σε ασθενείς, οι οποίοι εμφάνισαν αρχικά ανταπόκριση στη θεραπεία. Η ολανζαπίνη ενδείκνυται για τη θεραπεία μέτρου έως σοβαρού μανιακού επεισοδίου. Σε ασθενείς στους οποίους το μανιακό επεισόδιο ανταποκρίθηκε στη χορήγηση ολανζαπίνης, η ολανζαπίνη ενδείκνυται για την πρόληξη των υποτροπών σε ασθενείς με διπολική διαταραχή. **ΔΟΣΟΛΟΓΙΑ ΚΑΙ ΤΡΟΠΟΣ ΧΟΡΗΓΗΣΗΣ:** Σχιζοφρένεια: Η συνιστώμενη δοσολογία έναρξης της ολανζαπίνης είναι 10 mg/ημερήσια. Μανιακό επεισόδιο: Η δοσολογία έναρξης είναι 15 mg χρησιμοποιώντας εφάπαξ ημερήσιες σε μονοθεραπεία ή 10 mg ημερησίως σε συνδυασμένη θεραπεία. Πρόληξη υποτροπών στη διπολική διαταραχή: Η συνιστώμενη δοσολογία έναρξης είναι 10 mg/ημερησίως. Για ασθενείς που λαμβάνουν ολανζαπίνη για τη θεραπεία μανιακού επεισοδίου, να συνεχίζεται η θεραπεία για την πρόληξη υποτροπών στην ίδια δοσολογία. Εάν ένα νέο μανιακό, μικό, ή καταθλιπτικό επεισόδιο εμφανιστεί, η θεραπεία με ολανζαπίνη θα πρέπει να συνεχιστεί (με αναπροσαρμογή βελτιστοποίησης της δοσολογίας, εάν κρίνεται αναγκαίο), με συμπληρωματική αγωγή για την αντιμετώπιση των συμπτωμάτων της διάθεσης, όταν ενδείκνυται κλινικά. Κατά την διάρκεια της θεραπείας της σχιζοφρένειας, του μανιακού επεισοδίου και της πρόληξης των υποτροπών της διπολικής διαταραχής, η ημερήσια δοσολογία θα πρέπει να προσαρμόζεται ανάλογα με την κλινική κατάσταση του ασθενούς, στο εύρος των 5-20 mg/ημερησίως. Η ολανζαπίνη είναι δυνατόν να χορηγηθεί ανεξαρτήτως γεύματος, καθώς η απορρόφησή της δεν επηρεάζεται από τη ταυτόχρονη λήψη τροφής. **ΑΝΤΕΝΔΕΙΞΕΙΣ:** Υπερευαίσθηση στην ολανζαπίνη ή σε οποιοδήποτε από τα συστατικά του φαρμάκου. Ασθενείς με κίνδυνο εμφάνισης γλαυκώματος κλειστής γωνίας. **ΕΙΔΙΚΕΣ ΠΡΟΕΙΔΟΠΟΙΗΣΕΙΣ ΚΑΙ ΙΔΙΑΙΤΕΡΕΣ ΠΡΟΦΥΛΑΞΕΙΣ ΚΑΤΑ ΤΗΝ ΧΡΗΣΗ:** Η ολανζαπίνη δεν είναι εγκεκριμένη για τη θεραπεία ασθενών με ψύχωση και/ή διαταραχές συμπεριφοράς στο πλαίσιο όντας και δεν συνιστάται να χρησιμοποιείται στην ιδιαίτερα αυτή ομάδα ασθενών λόγω της αυξημένης θνητότητας και του κινδύνου εμφάνισης από εγκεφαλικό αγγειακό συμβόματος. **ΑΝΕΠΙΘΥΜΗΤΕΣ ΕΝΕΡΓΕΙΕΣ:** Οι μόνες πολύ συχνές (> 10%) ανεπιθύμητες ενέργειες, οι οποίες σχετίζονται με τη χορήγηση ολανζαπίνης κατά τη διάρκεια των κλινικών μελετών ήταν η υπνηλία και η αύξηση βάρους. Ανεπιθύμητες ενέργειες κατά την διάρκεια κλινικών μελετών. Διαταραχές αιματοποιητικού συστήματος. Συχνές (1-10%): Ημιανοσμία, διαταραχές μεταβολισμού και διατροφής. Πολύ συχνές (> 10%): Αύξηση βάρους. Συχνές (1-10%): Αύξηση της όρεξης, Αύξηση επιπέδου γλυκόζης. Αύξημένα επίπεδα τριγλυκεριδίων. Διαταραχές νεφρικού συστήματος. Πολύ συχνές (> 10%): Υπνηλία. Διαταραχές του βλαστικού έχουν παρατηρηθεί σε κλινικές μελέτες σε ασθενείς με νόσο Alzheimer. Επίδειξη της Παρκινσονικής συμπτωματολογίας και των ψευδοπαρκινσονικών αναρρέξεων πιο συχνά σε ασθενείς με νόσο Parkinson. Συχνές (1-10%): Ζάλη, ααθέρια, παρκινσονισμός, δυσκινησία. Καρδιακές διαταραχές. Συχνές (1-10%): Ορθοστατική υπόταση. Γαστρεντερικές διαταραχές. Συχνές (1-10%): Ήπιες, παροδικές αντιχολινεργικές επιδράσεις μεταξύ των οποίων δυσκολία στην ήγιστοσία. Διαταραχές ήπατος και χοληφόρων. Συχνές (1-10%): Παροδικές, ανοιμματοματικές αυξήσεις των ηπατικών τρανσαμινωσών (ALT, AST), ιδιαίτερα στην έναρξη της θεραπείας. Διαταραχές δέρματος και υποδόριου ιστού. Ασυνήθεις (0,1-1%): Αντιδραση φωτοευαισθησίας. Διαταραχές γενικού τύπου και ενόχληση στην θέση χορήγησης. Συχνές (1-10%): Αδυναμία, αδυναμία. Εργαστηριακές δοκιμασίες. Πολύ συχνές (> 10%): Αύξημένα επίπεδα προλακτίνης του πλάσματος, σπάνια συνοδεύονται από κλινικές εκδηλώσεις (όπως γυναικομαστία, γαλακτορροία και διακνωση των μαστών). Στους περισσότερους ασθενείς το επίπεδο προλακτίνης επιστρέφει στο φυσιολογικό άμα χωρίς διακοπή της θεραπείας. **ΦΑΡΜΑΚΟΔΥΝΑΜΙΚΕΣ ΙΔΙΟΤΗΤΕΣ:** Φαρμακο-θεραπευτική κατηγορία: αντιψυχωσικό, ATC κωδικός N05A H03. Η ολανζαπίνη είναι ένας αντιψυχωσικός, αντιμανιακός και σταθεροποιητικός της διάθεσης παράγοντας, ο οποίος εκδηλώνει ένα ευρύ φαρμακολογικό προφίλ επιδράσεων σε ένα αριθμό συστημάτων υποδοχέων. **ΜΟΡΦΕΣ/ ΤΙΜΕΣ:** Επικυλωμένα δισκία των 5 mg x 28, XT 50,69 €, NT 44,10 €, AT 74,59 €. Διασπώμενα δισκία στο στόμα Velotab 5mg x 28 XT 49,05 €, NT 42,67 €, AT 72,18 €. 10 mg σκόνη για ενέσιμο διάλυμα x 1 φιαλίδιο. Το ZYPREXA σκόνη για ενέσιμο διάλυμα ενδείκνυται για τον έλεγχο της ασυμψυχίας και των διαταραχών συμπεριφοράς σε ασθενείς με σχιζοφρένεια ή μανιακό επεισόδιο, όταν η από του στόματος θεραπεία δεν είναι πρόσφορη. XT 4,18 €, NT 3,64 €, AT 6,15 €. **ΕΠΙΧΟΡΗΓΗΣΗ ΑΠΟ ΤΑ ΤΑΜΕΙΑ:** 100%. Περιλαμβάνονται στη λίστα. **ΚΑΤΟΧΟΣ ΤΗΣ ΑΔΕΙΑΣ ΚΥΚΛΟΦΟΡΙΑΣ:** Eli Lilly Nederland B.V., Grootstg 1-5, NL-3991 BA Houten, Ολλανδία. **ΧΟΡΗΓΟΥΝΤΑΙ ΜΕ ΙΑΤΡΙΚΗ ΣΥΝΤΑΓΗ.** Για περισσότερες πληροφορίες απευθυνθείτε στην εταιρεία.



ΦΑΡΜΑΣΕΡΒ - ΛΙΛΛΥ Α.Ε.Β.Ε.
150 χιλμ. ΕΘΝ. ΟΔΟΥ ΑΘΗΝΩΝ - ΛΑΜΙΑΣ 145 64 ΚΗΦΙΣΙΑ ΘΗΛ.: 210-6294600 FAX: 210-6294610 Τ.Θ. 51288
ΓΡΑΦΕΙΟ ΘΕΣ/ΝΙΚΗΣ: ΑΔΡΙΑΝΟΥΠΟΛΕΩΣ 24 - ΚΑΛΑΜΑΡΙΑ - Τ.Κ.: 551 33 ΘΕΣ/ΝΙΚΗ ΘΗΛ.: (2310) 480160